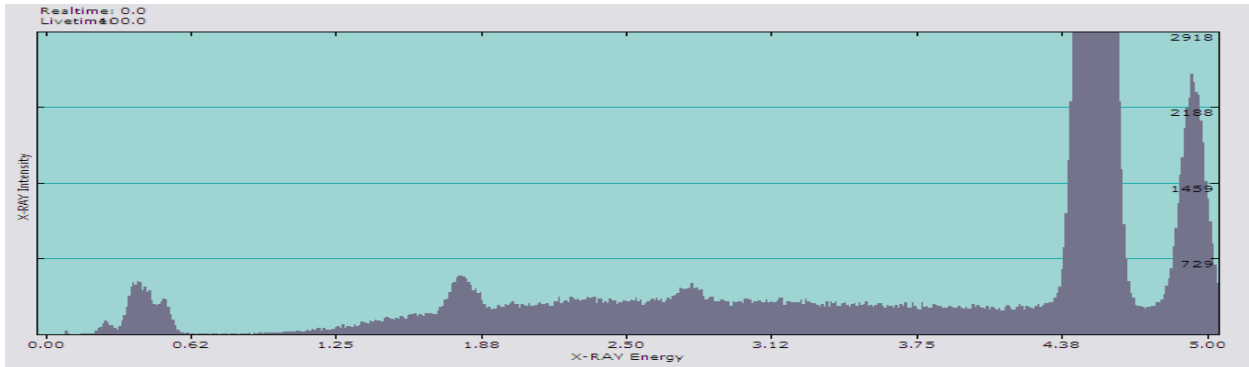
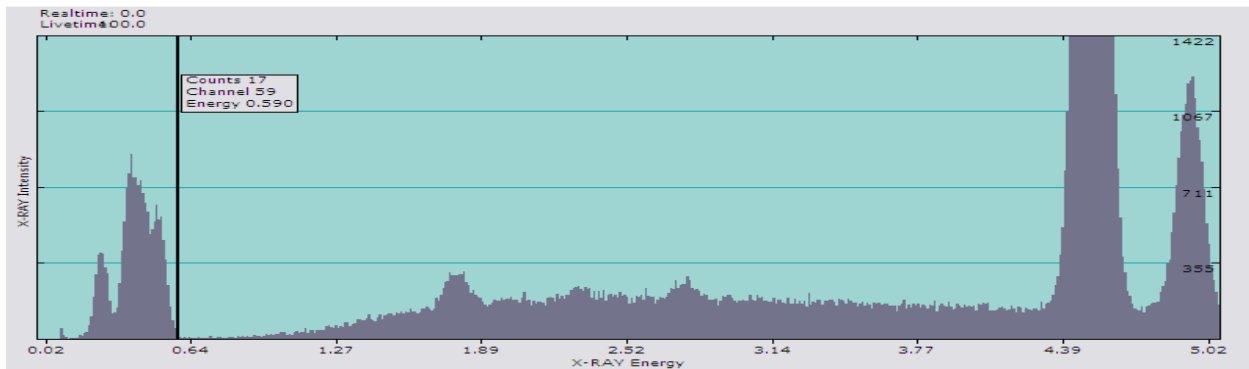


EDS Analysis of TiN and TiC Powder Using LoMAX X-Ray Optic

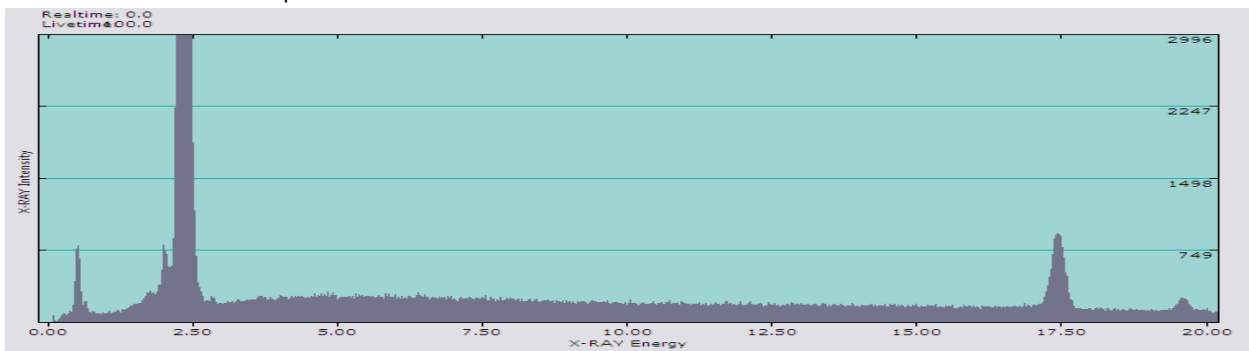
By Joe Ullmer, Joe X-Ray, LLC, www.joexray.net, Ph. +1 937 550-9224



Spectra of TiN TiC powder without the LoMAX attached. FEI Quanta SEM with EDAX Genesis System, 10mm active area SiLi detector, 15KV, 1na ~30% DT collected for 60s.



Spectra of TiN TiC powder with the LoMAX attached, notice the gain of 6x at C, 4x at N and 3x at O. FEI Quanta SEM with EDAX Genesis System, 10mm active area SiLi detector, 15KV, 700pa ~30% DT collected for 30s.



Spectra of Mo standard at 30KV to show that no artifacts are present with the LoMAX attached. FEI Quanta SEM with EDAX Genesis System, 10mm active area SiLi detector, 30KeV, 500pa ~30% DT collected for 60s.